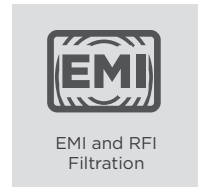
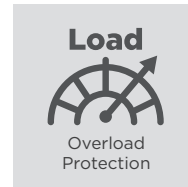
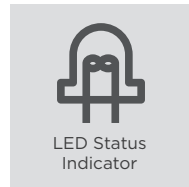
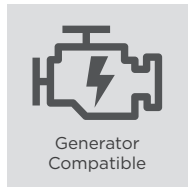
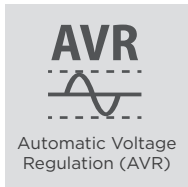
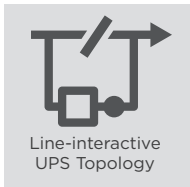


UT1675E/UT1875E
UT1675EI/UT1875EI



GENERATOR-COMPATIBLE TOWER UPS



The compact UPS compatible with generators to provide power protection

Designed for home, SOHO office and office applications, the UT Series adopts line-interactive topology with Automatic Voltage Regulation (AVR) function to offer stabilized AC power output. The products are compatible with generators to extend power continuity. Other features include overload protection and configurable alarm to safeguard your devices.

APPLICATION

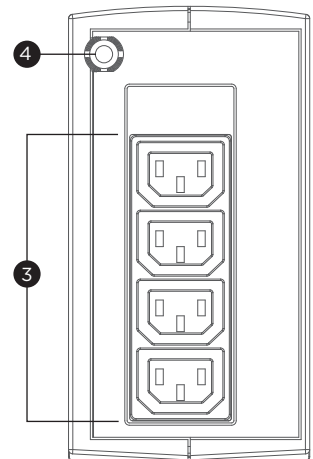
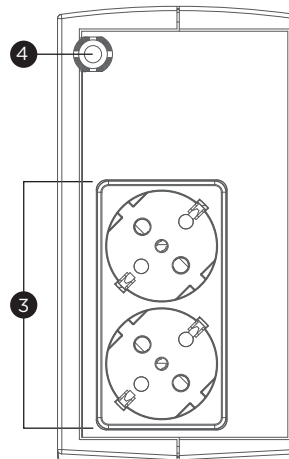
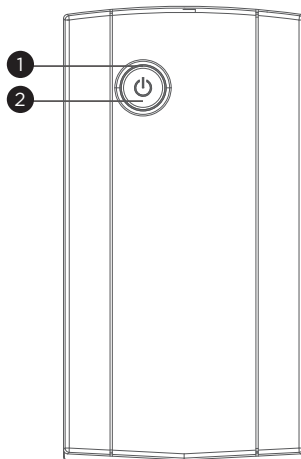
- Home
- Office
- SOHO Office

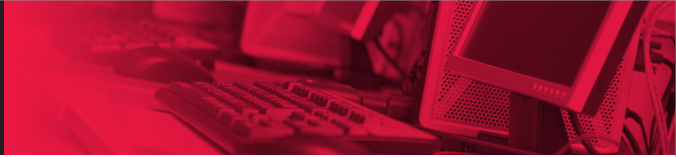
SERIES FEATURES

- Line-interactive UPS Topology
- Generator Compatible
- Overload Protection
- Configurable Alarm
- Automatic Voltage Regulation (AVR)
- LED Status Indicator
- EMI and RFI Filtration
- Tower Form Factor

PRODUCT CALLOUTS

1. Power On Indicator
2. Power On/Off Switch
3. Battery Backup Outlets
4. AC Input Power Cord





TECHNICAL SPECIFICATIONS

Model Name	UTI675E	UTI675EI	UTI875E	UTI875EI
General				
UPS Topology	Line-interactive	Line-interactive	Line-interactive	Line-interactive
Input				
Generator Compatibility	Yes	Yes	Yes	Yes
Nominal Input Voltage (Vac)	230 ± 10%	230 ± 10%	230 ± 10%	230 ± 10%
Input Voltage Range (Vac)	165 - 290	165 - 290	165 - 290	165 - 290
Input Frequency (Hz)	50 ± 5, 60 ± 5	50 ± 5, 60 ± 5	50 ± 5, 60 ± 5	50 ± 5, 60 ± 5
Input Frequency Detection	Auto-sensing	Auto-sensing	Auto-sensing	Auto-sensing
Rated Input Current (A)	3.06	3.06	3.97	3.97
Input Connector Type	Schuko	Schuko	Schuko	Schuko
Output				
Capacity (VA)	675	675	875	875
Capacity (Watts)	360	360	425	425
On Battery Waveform	Simulated Sine Wave	Simulated Sine Wave	Simulated Sine Wave	Simulated Sine Wave
On Battery Voltage(s) (Vac)	230 ± 10%	230 ± 10%	230 ± 10%	230 ± 10%
On Battery Frequency (Hz)	50 ± 1%, 60 ± 1%	50 ± 1%, 60 ± 1%	50 ± 1%, 60 ± 1%	50 ± 1%, 60 ± 1%
Automatic Voltage Regulation (AVR)	Single Boost, Single Buck	Single Boost, Single Buck	Single Boost, Single Buck	Single Boost, Single Buck
Overload Protection	Internal Current Limiting	Internal Current Limiting	Internal Current Limiting	Internal Current Limiting
Outlet(s) - Total	2	4	2	4
Outlet Type	Schuko x 2	IEC C13 x 4	Schuko x 2	IEC C13 x 4
Outlet(s) - Battery Backup	2	4	2	4
Typical Transfer Time (ms)	4	4	4	4
Battery				
Runtime at 60W (min)	28	28	30	30
Runtime at 90W (min)	16	16	20	20
Typical Recharge Time (Hours)	8	8	8	8
User-replaceable	No	No	No	No
Battery Type	Sealed Lead-acid	Sealed Lead-acid	Sealed Lead-acid	Sealed Lead-acid
Surge Protection & Filtering				
EMI/RFI Filtration	Yes	Yes	Yes	Yes
Management & Communications				
LED Indicators	Power On, Line Mode, Battery Mode, Low Battery			
Audible Alarms	Battery Mode, Low Battery, Overload, UPS Fault			
Physical				
Form Factor	Tower	Tower	Tower	Tower
Physical Size - UPS Module				
Dimensions (WxHxD) (mm.)	84 x 159 x 252	84 x 159 x 252	84 x 159 x 252	84 x 159 x 252
Weight (kg.)	3.6	3.8	4.2	4.2
Environmental				
Operating Temperature (°C)	0 - 40	0 - 40	0 - 40	0 - 40
Operating Relative Humidity (Non-condensing) (%)	0 - 90	0 - 90	0 - 90	0 - 90
Online Thermal Dissipation (BTU/hr)	40	40	40	40
Certifications				
Certifications*	CE, EAC	CE, EAC	CE, EAC	CE, EAC
RoHS	Yes	Yes	Yes	Yes

*Certifications may vary according to different regions. Visit www.cyberpower.com for more information.
 #All specifications are subject to change without notice.