

DS-K3G200BLX
Value Tripod Turnstile

- Bidirectional (Entering/Exiting) lane.
- High-brightness LED indicates the entrance/exit and passing status except "Pa" type.
- Fire alarm passing: When triggered, the arms will be dropped automatically for emergency evacuation.
- For "Pa" type, the face terminal need purchase separately.
- Easy integration of any 3rd access control system via relay output.

▪ Specification

System	
Motor	/
MCBF	≥ 2 million times
Interface	
Exit button	2
Fire alarm input	1
Hardware	
Access controller	Not supplied
Function	
Audio prompt	Not support
Keypad configuration	Support
Keyfob	Not support
General	
Throughput	30 to 60 persons per minute The actual throughput is affected by the person passing rate and passing method.
Lane width	550 mm (21.65")
Barrier material	1 mm stainless pipe
Pedestal material	SUS304 stainless steel 1 mm
Power consumption	Standby: 15 W Working: 30 W Peak: 40 W
Working temperature	-20 °C to 65 °C (-4 °F to 149 °F)
Working humidity	0% to 95% (No condensing)
Protective level	/
Dimensions	Without package: 426 mm × 268 mm × 982.5 mm (16.77" × 10.55" × 38.68") With package: 700 mm × 430 mm × 1140 mm (27.56" × 16.93" × 44.88")
Weight	Net: 24.26 kg (53.48 lb) Gross: 30.77 kg (67.84 lb)
Approval	CE/CB/RoHS/REACH/WEEE
Power supply method	Power supply: 100 to 240 VAC~, 50/60 Hz, 1A-0.5A
Configuration	
Lane width	550 mm
Pedestal length	426 mm
Module selection	NO
Pedestal width	100 mm
Wall distance	20 mm
Base	NO
Barrier material	Stainless steel pipe
Application environment	Indoor and outdoor
Authentication mode	Card, Face, QR code
Card type	EM, M1
Recommended width	550 mm
Side pedestal	YES
Side pedestal type	Fence (130 mm)
Product type	Tripod Turnstile
Movement Protrusion Width	0 mm

Convert Face	NO
Door wing gap	50 mm
Door Height	Default(0.81m)

▪ Note

The main element of the turnstile is stainless steel, which is rust less (antioxidant) and corrosion resistant (The anti-corrosion ability in the medium of acid, alkali, and salt). In order to keep the stainless steel from being oxidized or corroded, you should clean and care the turnstile surface periodically.

The instructions and tips for maintaining the turnstile are as follows:

1. Select different stainless steel types according to the variety of the environments. You can select 304 stainless steel for common circumstances and 316 stainless steel for the scenarios of seaside and chemical plants.
2. Keep the device surface clean and dry.
3. Use non-woven cloth and ethyl alcohol to clean the dirt on the device surface.
4. Use sourcing pad (do not use mesh cleaning ball) to clean the rust on the device surface by following the wire drawing on the stainless steel. And then use non-woven cloth and stainless steel cleaner to wipe the device surface.
5. Clean and maintain the device by using non-woven cloth and stainless steel cleaner periodically. It is suggested to clean the device every month in common circumstances and every week for severe environments (seaside and chemical plants for instance).

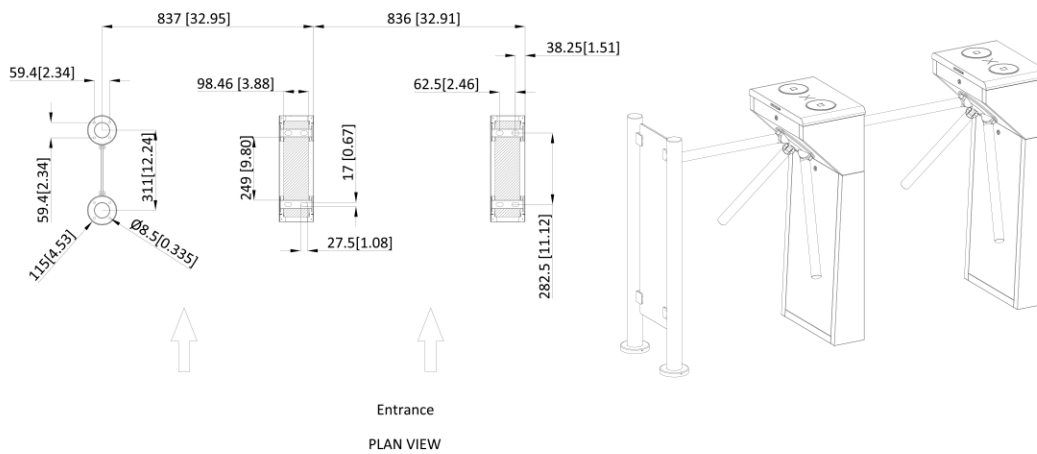
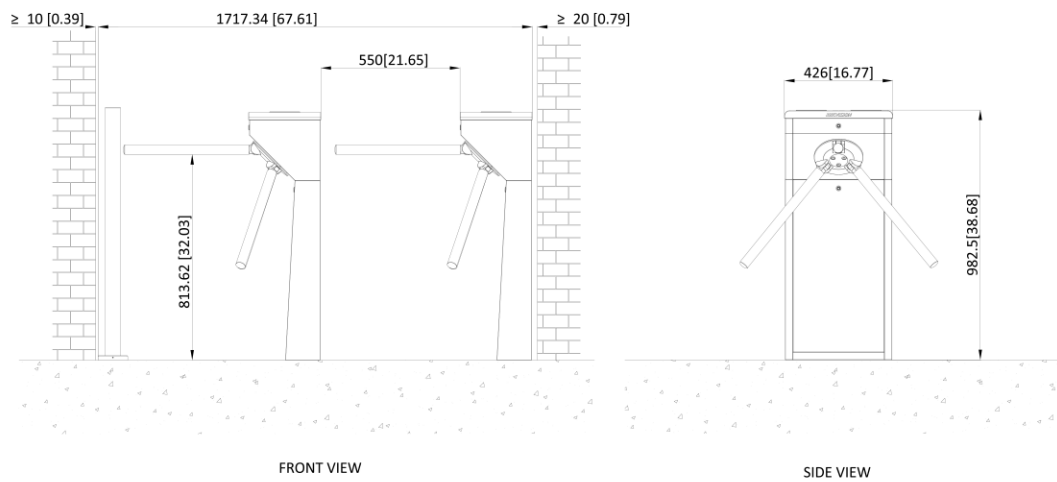
▪ Available Model

DS-K3G200BLX-R/Dm55adapter

DS-K3G200BLX-R/Dm55

DS-K3G200BLX-R/Pa-Dm55

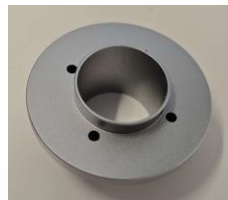
▪ Dimension



▪ **Accessory**

▪ **Included**

DS-KSB02-Pa



▪ **Optional**

DS-KEB30-AC

DS-K1801AE

DS-K1801AM



See Far, Go Further



www.hikvision.com
support@hikvision.com

